

**KEY:-**

- |   |   |   |                   |   |  |   |                      |
|---|---|---|-------------------|---|--|---|----------------------|
|  | BHLR 2010 LAeq Traffic Noise Level Contours (showing only 50dB(A) contour line) |  | Scheme Contours   |  | Existing Bridleway & Shared Part of the Greenway |  | Cycling / Pedestrian |
|  | BHLR 2025 LAeq Traffic Noise Level Contours (showing only 50dB(A) contour line) |  | Existing Contours |  | Equestrian                                       |  | Pedestrian Only      |

This map is reproduced from Ordnance Survey material with the permission of Ordnance Survey on behalf of the Controller of Her Majesty's Stationary Office © Crown copyright. Unauthorised reproduction infringes Crown copyright and may lead to prosecution or civil proceedings. 100019601. (2008).

**BEXHILL TO HASTINGS LINK ROAD**

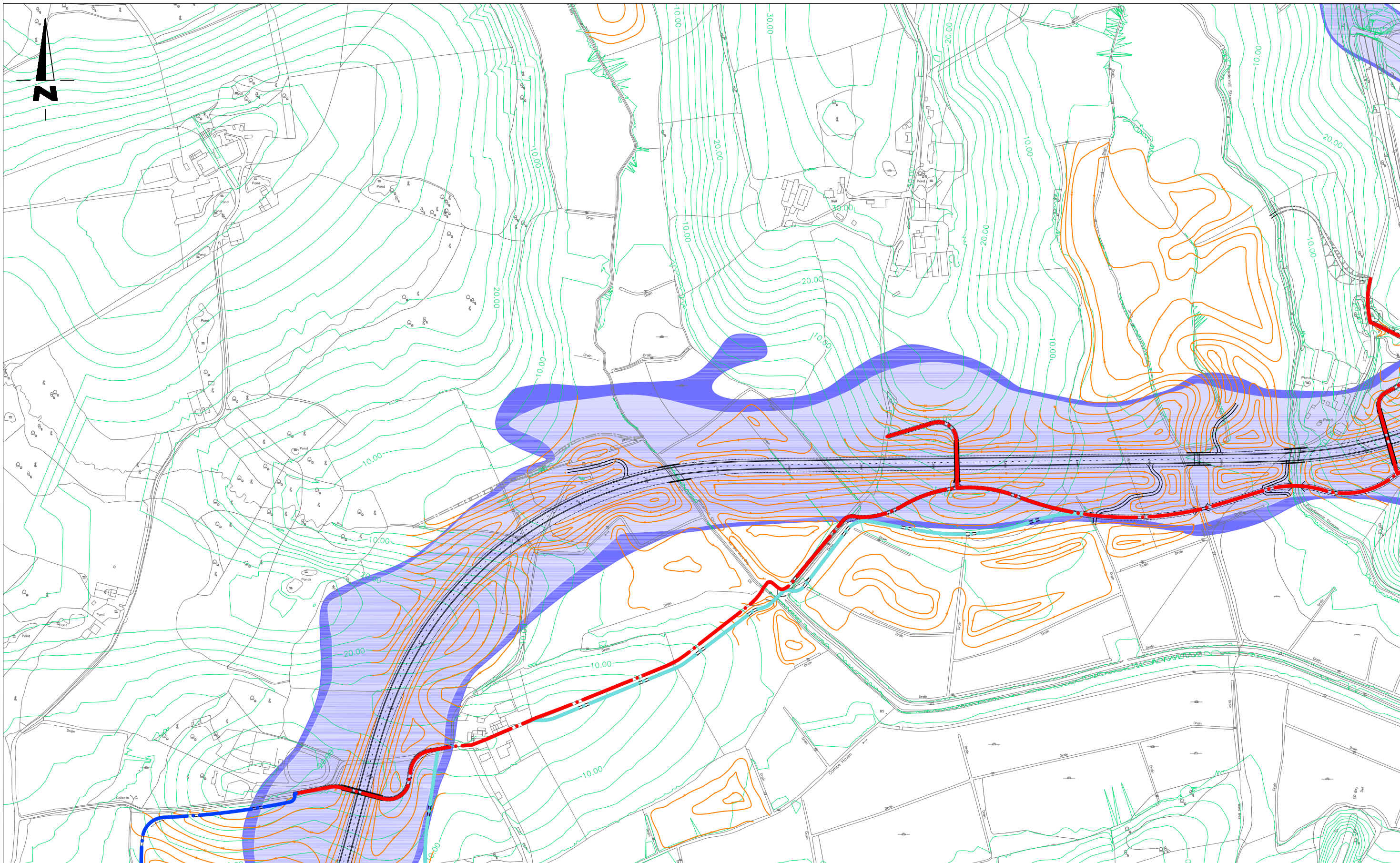
Figure : 13.22.A  
 Scheme Noise Level  
 Contours - 2010 & 2025  
 LAeq 50dB(A)

Scale	1:5000
Sheet	1 of 3
Revision	-
April 2008	

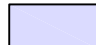


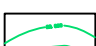

Carolyn Dwyer BEng (Hons), DipTrans, DMS, MIHT MILT  
 Assistant Director, Transport & Waste  
 County Hall, St. Anne's Crescent  
 Lewes, East Sussex BN7 1UE  
 Telephone: 01273 481000

**Transport & Environment**





**KEY:-**

- |   |   |   |                   |   |  |   |                      |
|---|---|---|-------------------|---|--|---|----------------------|
|  | BHLR 2010 LAeq Traffic Noise Level Contours (showing only 50dB(A) contour line) |  | Scheme Contours   |  | Existing Bridleway & Shared Part of the Greenway |  | Cycling / Pedestrian |
|  | BHLR 2025 LAeq Traffic Noise Level Contours (showing only 50dB(A) contour line) |  | Existing Contours |  | Equestrian                                       |  | Pedestrian Only      |

This map is reproduced from Ordnance Survey material with the permission of Ordnance Survey on behalf of the Controller of Her Majesty's Stationary Office © Crown copyright. Unauthorised reproduction infringes Crown copyright and may lead to prosecution or civil proceedings. 100019601. (2008).

## BEXHILL TO HASTINGS LINK ROAD

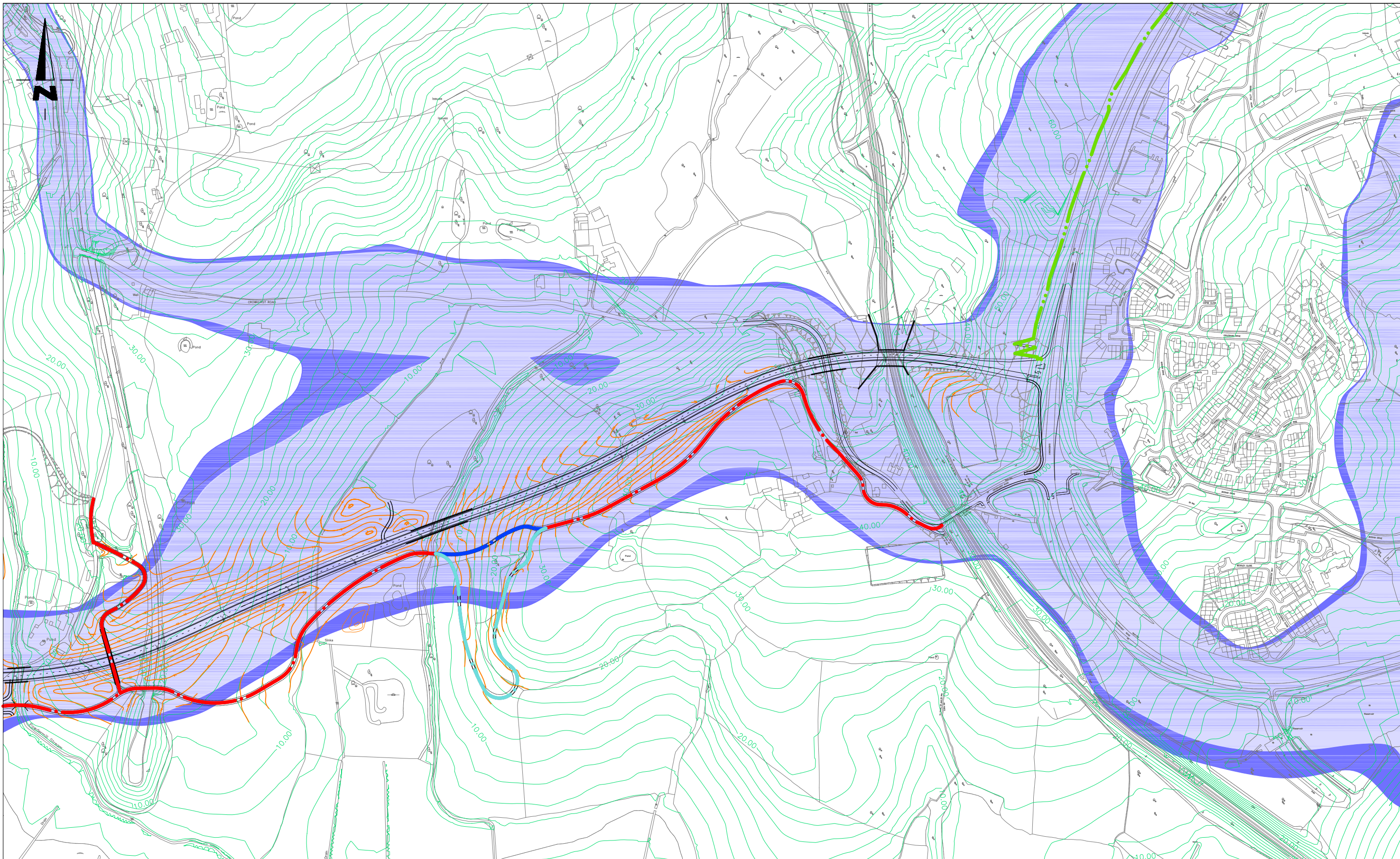
Figure : 13.22.B  
 Scheme Noise Level  
 Contours - 2010 & 2025  
 LAeq 50dB(A)

Scale	1:5000
Sheet	2 of 3
Revision	-
April 2008	

Carolyn Dwyer BEng (Hons), DipTrans, DMS, MIHT MILT  
 Assistant Director, Transport & Waste  
 County Hall, St. Anne's Crescent  
 Lewes, East Sussex BN7 1UE  
 Telephone: 01273 481000

Transport & Environment





KEY:-	
	BHLR 2010 LAeq Traffic Noise Level Contours (showing only 50dB(A) contour line)
	BHLR 2025 LAeq Traffic Noise Level Contours (showing only 50dB(A) contour line)
	Scheme Contours
	Existing Contours
	Existing Bridleway & Shared Part of the Greenway
	Equestrian
	Cycling / Pedestrian
	Pedestrian Only

This map is reproduced from Ordnance Survey material with the permission of Ordnance Survey on behalf of the Controller of Her Majesty's Stationary Office © Crown copyright. Unauthorised reproduction infringes Crown copyright and may lead to prosecution or civil proceedings. 100019601. (2008).

## BEXHILL TO HASTINGS LINK ROAD

Figure : 13.22.C  
Scheme Noise Level  
Contours - 2010 & 2025  
LAeq 50dB(A)

Scale	1:5000
Sheet	3 of 3
Revision	-
April 2008	

Carolyn Dwyer BEng (Hons), DipTrans, DMS,  
MIHT MILT  
Assistant Director, Transport & Waste  
County Hall, St. Ann's Crescent  
Lewes, East Sussex BN7 1UE  
Telephone: 01273 481000

Transport & Environment

